

Professional colour laser printer

Robust, high-quality,
and designed for
sustainable printing

Designed to meet the demands of modern workplaces, the HL-L8430CDW combines fast print speeds and reliable colour output with robust security features you can depend on. Built with high-quality, durable components, it offers the reliable build quality required of a professional business device. Sustainability is at the heart of the HL-L8430CDW's design, helping organisations reduce their environmental impact.

HL-L8430CDW

Key features

- Print up to 31 pages per minute (ppm)
- Up to 20 sides per minute (spm), 2-Sided print
- Dual-band Wi-Fi (2.4GHz and 5GHz)
- Gigabit ethernet
- 250 sheet paper tray
- 50 sheet multi-purpose tray
- Auto paper low/empty detection
- 3,000 page black and 1,800 page colour in-box toners
- 7,500 page black and 6,500 page colour toners available
- Available under a managed print service (MPS) contract



FPOT
less than
9.9 seconds

250
sheet optional
paper tray

NFC
secure
authentication

Sustainability

Reducing our environmental impact

- Increase printer life and reduce downtime with easy to replace parts
- 100% EPS-free packaging for easy recycling
- Designed and built to be remanufactured
- Made with up to 19% recycled plastic²³
- Up to 31% reduction in Typical Energy Consumption (TEC)²²
- Up to 12% reduction in CO2 emissions²⁴
- Blue Angel certified for meeting high environmental standards



Productivity

Reliable performance, built to last

- Robust design, built for demanding businesses
- Reduce downtime with fewer replacements by using high capacity toners
- Keep printing for longer with scalable paper capacity



Secure by design

Device security

Your device protects your business by minimising attack surfaces through:

- Secure user access via LDAPS, Active directory, and NFC authentication
- Controlled privileges using secure function lock and setting lock
- System integrity ensured by intrusion detection, Secure Boot, and digitally signed firmware

Network security

Your network is protected with flexible, industry-standard tools including:

- Intrusion protection through protocol control, interface restrictions, and IPv4 filtering
- Secure connections via IEEE 802.1X for enterprise wired and wireless networks
- Encrypted communication using TLS, SSH, IPSEC, HTTPS, and SNMPv3
- Centralised management with device master settings, BRAdmin pro 4, and mass deployment tool
- Syslog reporting for seamless real-time SIEM integration

Document security

Your documents are protected through:

- Encrypted transfer via IPPS/HTTPS for printing
- Non-persistent memory, ensuring data is wiped after each job or reboot
- Secure print release, so documents only print when you collect them
- Third party integration via Brother Solutions Interface (BSI), to streamline workflows

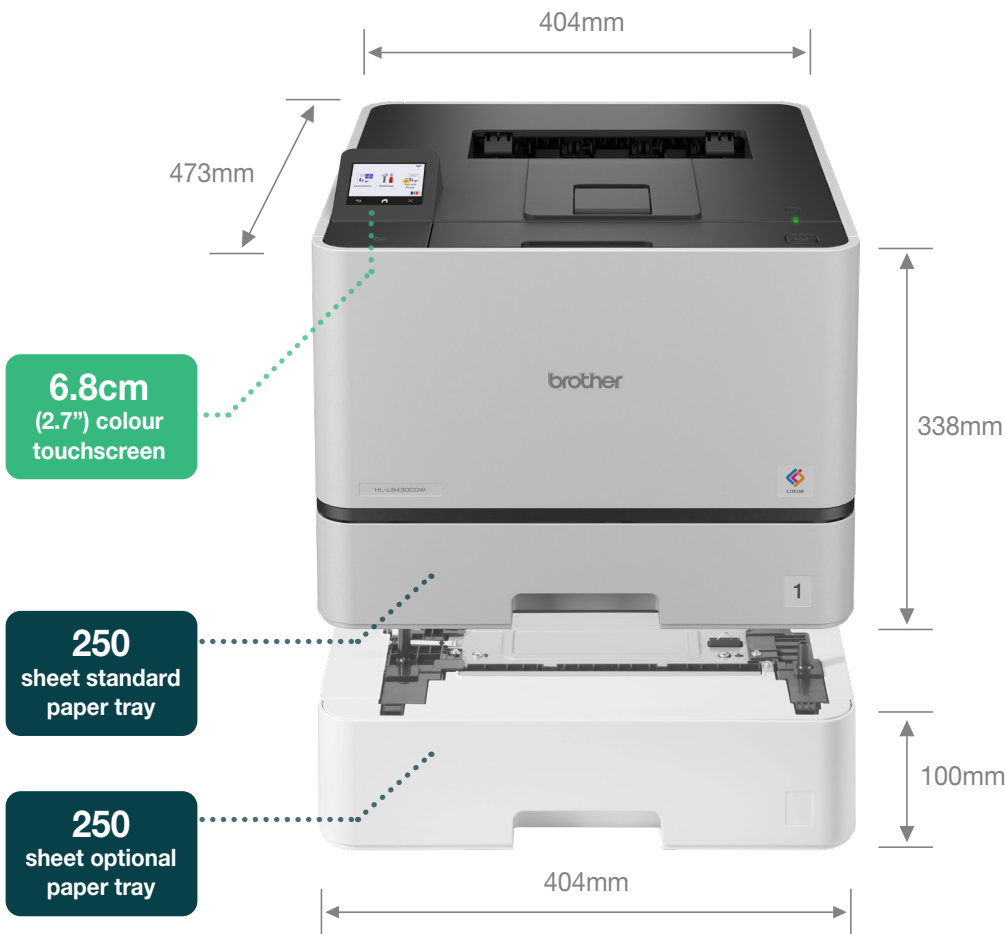
Brother MPS

Make printing simple with Brother MPS

Managed Print Services (MPS) ensure you maximise the performance and value of your print devices. Whatever your printing needs, we'll be "At your side" to find the solution that simplifies printer admin, saves time, keeps costs down, and helps you stay productive.

Benefits include:

- No long-term commitments
- Ink and toner delivery before you run out
- Fast breakdown support
- Easy supplies recycling



Supplies

Toners



TN625 (in-box)

3,000BK, 1,800 C,M,Y

TN625XL

5,500BK, 4,500 C,M,Y

TN625XXL

7,500BK, 6,500 C,M,Y

Accessories

Trays and cabinet

LT350CL

250 sheet lower tray

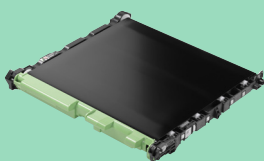
ZUNTBC4FARBLASER

Floor standing cabinet

Replaceable parts



Drum unit
DR625CL



Belt unit
BU635CL



Waste toner box
WT229CL



Fuser unit
FD5000

Paper feed kit
for MP tray
PFM5000



General

Technology

Electrophotographic (laser)

Laser classification

Class 1 laser product

Memory

512MB internal

Processor

1200MHz

Control panel

6.8cm (2.7") colour
touchscreen LCD

Local interface¹⁵

Hi-speed USB 2.0,
USB 2.0 host (front)

Wired network interface

GigE (10Base-T/100Base-TX/
1000Base-T)

Wireless network interface

2.4GHz: IEEE 802.11b/g/n
5GHz¹⁴: IEEE 802.11a/n
(infrastructure mode),
vertical pairing

Wi-Fi Direct®

Print wirelessly without having
to use a wireless access point
(both automatic and manual
methods supported)

Print^{8,20}

Print speed (A4)

Up to 31ppm

Print speed 2-Sided (A4)

Up to 20spm
(10 sheets per minute)

Resolution

2,400dpi (2,400 x 600dpi),
600 x 600dpi
(horizontal x vertical,
dots per inch)

First print out time (FPOT)

Less than 9.9 seconds from
ready mode and standard tray

Warm up time

Less than 15.1 seconds from
sleep mode

Driverless printing compatibility

Windows modern print platform ready

Supports seamless, driverless
printing via IPP for instant setup
on Windows 10 (21H2+) and
Windows 11 devices

Mopria

Print common file types
from supported Android
mobile devices and Windows
computers

Apple AirPrint

Print common file types from any
AirPrint enabled application

Chrome OS™

Supports work with
Chromebook printing

Our printers support driverless printing across Windows, macOS, iOS, and Android devices for instant, secure, and hassle-free setup

Printer functions

Direct print

Print directly from the front USB host port using a USB flash memory drive. Supported formats include: PDF 2.0, JPEG, TIFF (scanned using brother model)

Print complete notice

A notification can be set to go to your computer when printing

Manual 2-Sided print^{4,21}

Manual 2-Sided printing recommended for media not supported by automatic 2-sided print

Carbon copy⁴

Prints additional copies of the same document to paper taken from additional paper trays

Header footer print^{3,21}

Add the date, time, login user name, or custom text to the top or bottom of each printed page

Skip tray¹⁶

Configures your paper tray selection to avoid specific trays/media for regular printing

N-up printing³

Reduce up to 2, 4, 9, 16 or 25 A4 pages into just one A4 page, Mac (Airprint) up to 2, 4, 6, 9, or 16

Poster printing^{4,21}

Enlarge 1 A4 page into a poster using 4, 9, 16 or 25 A4 pages

Watermark printing^{3,21}

Watermark your documents with predefined or user-defined text

Secure print³

Protect print jobs with a release code required at the device in order for them to be printed

Reverse print^{4,21}

Rotate the content of a printed document by 180°

Paper handling

Paper input²

Standard (tray 1)

250 sheets

Multi-purpose tray

50 sheets, 10 envelopes

Paper output²

150 sheets face down

1 sheet face up (straight path)

Media sizes

Standard (tray 1)

Letter, legal, executive, A4, A5, A5 (long edge), A6, Mexico legal, India legal, folio, 16K (195 x 270mm)

Multi-purpose tray

Width: 76.2mm - 216mm

Length: 116mm - 355.6mm

Envelopes: C5, Com-10, DL, monarch

Optional trays

Letter, legal, executive, A4, A5, Mexico legal, India legal, folio, 16K (195 x 270mm)

Media weights

Standard (tray 1)

60 - 105gsm

Multi-purpose tray

60 - 163gsm

Optional trays

60 - 105gsm

Media types

Standard (tray 1)

Thin paper, plain paper, thick paper, recycled paper

Multi-purpose tray

Thin paper, plain paper, thick paper, recycled paper, bond paper, label, envelope, env. thin, env. thick, glossy paper¹⁷

Optional trays

Thin paper, plain paper, recycled paper

Auto 2-Sided print

Thin paper, plain paper, thick paper, thicker paper, recycled paper, glossy paper

Paper input sensors

On-screen and optional email alert notifications when input trays are empty or running low

Connectivity

Mobile connect

Use a Brother app to print from a mobile device running iOS or Android operating system

Brother Print Service Plugin⁵

Print from Android devices without a dedicated app

Microsoft Universal print

Organisations can manage their brother print infrastructure through cloud services from Microsoft

Alexa print¹⁵

Print using echo device and printer connected to the same network

Brother Apps⁹

Cloud secure print

Web Connect^{9,13}

Without a PC you can download and print from Box, Microsoft SharePoint Online, Dropbox, Evernote, OneDrive, Google Drive™, OneNote

Email print^{9,13}

Enables driverless printing via email.

Fleet management tools⁵

BRAdmin⁴

LAN/WAN management software

Clone device settings

Copy settings and configurations from one machine to another via a USB flash drive

Auto pull configuration

The device periodically checks an encrypted settings file on a network location. If the device has been changed the file is used to change back to the desired state configuration

Embedded web server

Using the IP address or node name of your device access via USB or network via a web browser to the web based print management software embedded onto the device using an randomly encrypted password

Mass deployment tool

Provides a configuration interface to help manage and deploy device settings.

Software⁵

Brother iPrint&Scan

Print and check the machine status from Windows or macOS PC using Brother software

Print support app⁴

As an alternative to Windows Modern Print this method enhances compatibility and ease of use by enabling printing without traditional printer drivers, making it a versatile and efficient solution for modern printing needs accessible through the Microsoft Store

Visit: support.brother.com for the full list of supported OS and to download the latest software
All trademarks, brand and product names are property of their respective companies

Legacy printer drivers²⁰

PCL driver⁴

Generic PCL XL driver

Universal printer driver⁴

BR-script3 driver that enables printing to any network or locally connected Brother laser printer that supports PostScript

Print languages

PCL6, BR-Script3

Embedded fonts (PCL)

73 scalable fonts, 12 bitmap fonts

Embedded fonts (BR-script)

66 scalable fonts

Embedded barcodes (PCL)

16 bar codes fonts - Code39, Interleaved 2 of 5, FIM (US-PostNet), Post Net (US-PostNet), EAN-8, EAN-13, UPC-A, UPC-E, Codabar, ISBN (EAN), ISBN (UPC-E), Code128 (set A,B, C), EAN128 (set A,B,C), Code93, GS1Databar, MSI

Linux

Printer driver (Linux, CUPS, LPD/LPRng)

Network security

Wired network security

SMTP-AUTH, SSL/TLS (IPP, HTTP, SMTP, LDAP), SNMP v3, 802.1x (EAP-MD5, EAP-FAST, PEAP, EAP-TLS, EAP-TTLS), OAuth(SMTP), Kerberos, Ipsec

Wireless network security

WEP 64/128 bit, WPA-PSK (TKIP/AES), WPA2-PSK (TKIP/AES), WPA3-SAE (AES), SMTP-AUTH, SSL/TLS (IPP, HTTP, SMTP, LDAP), SNMP v3, 802.1x (EAP-FAST, PEAP, EAP-TLS, EAP-TTLS), OAuth(SMTP), Kerberos, IPsec, Wi-Fi Protected Setup® (WPS)¹⁰

IPv4

ARP, RARP, BOOTP, DHCP, APIPA(Auto IP), WINS/NetBIOS name resolution, DNS Resolver, mDNS, LLNMR responder, LPR/LPD, Custom Raw Port/Port 9100, SMTP Client, IPP/IPPS, FTP Server, CIFS Client, TELNET Server, SNMPv1/v2c/v3, HTTP/HTTPS server, TFTP client and server, ICMP, Web Services (print), SNTN Client, LDAP, LDAPS, Syslog

Display IP address

The dynamic IP assigned to your device can be displayed on the home screen

IPv6

NDP, RA, DNS resolver, mDNS, LLNMR responder, LPR/LPD, Custom Raw Port/Port 9100, IPP/IPPS, SMTP Client, FTP Server, CIFS Client, TELNET Server, SNMPv1/v2c/v3, HTTP/HTTPS server, TFTP client and server, ICMPv6, web services (print), SNTN Client, LDAP, LDAPS, Syslog

IP filter

Restrict which network users can or cannot access the device over the network

Security features

Email notifications

Automatically have the device send email alerts when it requires attention, such as when the toner is low or needs replacing

Email reports

Receive usage reports on a regular basis via email

Secure boot

All Brother Print devices are secure by design. Devices automatically recognise security attacks and take preventative measures, including rebooting where necessary, in order to ensure the device remains secure

Digitally-signed firmware

The firmware for Brother Print devices is digitally signed and secure

Active directory/LDAP authentication

Utilise existing infrastructure to restrict access to Brother devices using AD/LDAP. Staff can easily use their existing network login credentials to authenticate

Port-based network access control

(IEEE 802.1x)
Brother devices are in full compliance with this standard, to allow connection to an 802.1x EAP (extensible authentication protocol) protected network

Restrict network protocols

The network access control feature allows an administrator to restrict communication protocols (e.g. FTP, Telnet) as required

Setting lock

Configure secure access to the devices control panel by locking it

Secure function lock 3.0

Use a four digit pin or a password to identify and authenticate an individual or groups of users over a network. Allows access control with username for up to 200 users

Cloud secure print⁹

Enables password protected driverless print job release

Store print log

Allows audit of a print log file saved to CIFS server. Record ID, type, name, user, date, time, page count for every print job

Firmware updates

In addition to allowing automatic updates to the latest version the printer can be set to not receive older firmware versions to avoid downgrade by an unauthorised user

SysLog

Allows IT admin to access a single application (SIEM tool) to get device status updates for audit purposes over Syslog

Near-field communications (NFC)

NFC card reader

Supports secure user authentication via NFC card reader for access control, and enables personalised workflows through NFC shortcut configuration. Third-party card reader support requires additional purchase and can be connected to the front USB host and registered via the embedded web server

Integrated support for NFC

include: (ISO14443 Type A) MIFARE Standard / Plus / Ultralight / Ultralight C / DESfire / my-d move (ISO15693 Type B) Tag-it

External NFC card reader support

RFIDeas pcProx Enroll - RDR-6081AKU; RDR-6281AKU; RDR-6381AKU; RDR-6E81AKU; RDR-6H81AKU
RFIDeas AIR ID Enroll - RDR-7081AKU; RDR-7581AKU; RDR-7F81AKU
Elatec - TWN3 MIFARE; TWN3 MIFARE NFC; TWN3 Multi ISO; TWN4 MIFARE NFC

Developers

Brother Solutions Interface (BSI)

Create powerful cloud and on premise solutions directly integrating the advanced print, scan and security capabilities of Brother devices. For more information visit: www.brother.eu/developers

Supplies¹, upgrades and accessories

Standard toner (in-box)

TN625
3,000 pages (BK)
1,800 pages (C,M,Y)

High yield toner

TN625XL
5,500 pages (BK)
4,500 pages (C,M,Y)

Super high yield toner

TN625XXL
7,500 pages (BK)
6,500 pages (C,M,Y)

Drum unit

DR625CL approx 50,000 pages
at 3 pages per job

Belt unit

BU635CL approx 100,000
pages at 3 pages per job

Waste toner box

WT229CL approx 50,000 pages
at 5 pages per job

Fuser unit

FD5000 approx 100,000 pages
at 5 pages per job

Paper feed kit for MP tray

PFM5000 approx 50,000 pages
at 5 pages per job

Carton contents

Machine, in-box toners, drum,
belt, waste toner box, fuser, PF
kit, power supply cord, quick
set-up guide, warranty card, (PC
interface cable NOT included)

Optional paper trays²

250 sheet tray (LT350CL)
Maximum combinations of up to
2 x LT350CL

Optional cabinet

ZUNTBC4FARBLASER Brother
professional colour laser floor
standing printer cabinet

Dimensions and weights (WxDxH)

Printer without carton

404 x 473 x 338mm - 21.0kg
inc. TN/DR/WT/BU/FD/PF

Printer with carton

606 x 561 x 501mm - 26.6kg

Optional paper trays

250 sheet tray:
404 x 446 x 100mm - 3.25kg

Optional cabinet without carton

410 x 484 x 400mm - 10kg

Duty cycle

Recommended monthly

Up to 5,000 pages monthly
print volume

Maximum monthly⁶

Up to 60,000 pages monthly
print volume

Environment

Power requirement

AC 220-240V, 50/60Hz

Power consumption¹¹

Printing: 540W
(330W in quiet mode)
Ready: 60W
Sleep: 7.6W
Networked standby: 7.1W
Deep sleep 0.4W
Power off 0.04W

Sound pressure¹²

Printing: 49dbA
Quiet print mode: 44dbA
Default ready: 31dbA

Sound power¹²

Printing: 6.54BA
Quiet print mode: 5.91BA
Default ready: 4.48BA
Deep sleep: 3.38BA

TEC value

0.40 kWh/week

Eco mode

With seamless functionality
the eco control system of the
printer is designed to ensure
lower noise levels, consume
less energy when not in use and
optimise toner usage which all
help to reduce the total cost of
ownership

Operating environment

Humidity: 20 - 80%
Temp: 10° - 32.5° centigrade
50° - 90.5° fahrenheit

Storage environment

Humidity: 35 - 85%
Temp: 0° - 40° centigrade
32° - 104° fahrenheit

Computer platforms

Windows

Windows 11
(Home|Pro|Education|Enterprise)
Windows 10
(Home|Pro|Education|Enterprise)
(32 or 64 bit editions)
Windows server
2025, 2022, 2019, 2016

Linux

Supported package
management system:¹⁹
dpkg, rpm

Macintosh¹⁸

macOS 13 or greater

ChromeOS™

Compatible with Chromebooks,
including “Works with
Chromebook” certified
printing support

Visit: support.brother.com for the full list of supported OS and to download the latest software

Disk space requirements

50MB - Windows drivers only
1.8GB - Windows 11, 10,
applications inc drivers

500MB - macOS applications

20MB - Linux drivers only

Certification

Blue Angel

Nordic Swan

GS Mark

AirPrint

Wi-Fi certified

Wi-Fi Direct, Wi-Fi Protected
Setup, WPA3™ - Enterprise,
Personal

Mopria certified

Ensures universal compatibility
for driverless printing across
Windows, Android, and
compatible mobile operating
systems

1. Approx declared toner yield value in accordance with ISO/IEC 19798. 2. Calculated with 80gsm sheets of paper. 3. Windows & macOS. 4. Windows only. 5. Free download from the Brother solutions centre <http://solutions.brother.com> 6. Number of printed pages per month can be used to compare designed durability between Brother products. For maximum printer life, it is best to choose a printer with a duty cycle that exceeds your print requirements. 7. Requires Brother software. 8. Based on ISO/IEC 17629. 9. Requires an internet connection. 10. Wi-Fi Direct supports WPA2-PSK (AES) only. 11. Measured according to IEC 62301 Edition 2.0. All values are approximate; power consumption varies depending on the usage environment or part wear. 12. In accordance with ISO 7779. 13. Requires additional activation. 14. May not be available in your region. 15. Third Party USB hubs not supported. 16. Requires installation of optional trays. 17 Set only a single sheet. 18. On macOS AirPrint only. 19. Red Hat Enterprise Linux 8.6 64bit, Red Hat Enterprise Linux 9.1 64bit, Fedora 39 64bit, Mageia 9 32bit, Mageia 9 64bit, openSUSE 15.5 64bit, SUSE Enterprise15-SP4 64bit, Debian 12.2.0 32bit, Debian 12.2.0 64bit, Ubuntu MATE 18.04 32bit, Ubuntu 22.04 64bit, Ubuntu 23.10 64bit, Linux Mint 21.2 64bit, Ubuntu 24.04 64bit. 20. Microsoft is transitioning towards driverless printing as the preferred standard. Legacy driver installations remain supported for customers with existing deployment requirements. 21. Advanced settings via legacy driver or the print support app only. 22. Compared to Brother's previous equivalent model. 23. Figure based on Brother's internal analysis at the time of publication. Figures may fluctuate depending on manufacturing methods and the availability of materials. 24. These results are based on Brother's internal calculations, compared to previous equivalent model. The CO₂ emissions scope covers C1 (purchased goods and services), C11 (use of sold products), and C12 (end-of-life treatment of sold products). Exact values may vary depending on country or region, manufacturing methods and the availability of materials.



Working with you for a better environment

At Brother, our green initiative is simple. We strive to take responsibility, act respectfully and try to make a positive difference to help build a society where sustainable development can be achieved. We call this approach Brother Earth.

www.brotherearth.com

All specifications correct at the time of printing and are subject to change. Brother is a registered trademark of Brother Industries Ltd. Brand product names are registered trademarks or trademarks of their respective companies.