

## Professional colour laser printer

Robust, high-quality,  
and designed for  
sustainable printing

Reliable performance for demanding businesses. The HL-L8570CDW, is engineered to produce professional quality prints every time. With fast print speeds, enterprise-level security and solutions enabled to streamline operations and enhance productivity across teams.

### HL-L8570CDW

#### Key features

- Print up to 31 pages per minute(ppm)
- 2-Sided print up to 20 sides per minute(spm)
- Dual-band Wi-Fi (2.4GHz and 5GHz)
- Gigabit ethernet
- 250 sheet paper tray
- 50 sheet multi-purpose tray
- Auto paper low/empty detection
- 7,500 page and black and 6,500 page colour in-box toners
- 10,000 page black and colour toners available
- Available under a managed print service (MPS) contract



PRINT



WIRELESS

**FPOT**  
less than  
9.9 seconds

**250/520**  
sheet optional  
paper tray

**NFC**  
secure  
authentication

## Sustainability

### Reducing our environmental impact

- Increase printer life and reduce downtime with easy to replace parts
- 100% EPS-free packaging for easy recycling
- Designed and built to be remanufactured
- Made with up to 19% recycled plastic<sup>23</sup>
- Up to 31% reduction in Typical Energy Consumption (TEC)<sup>22</sup>
- Up to 12% reduction in CO2 emissions<sup>24</sup>
- Blue Angel certified for meeting high environmental standards



## Productivity

### Reliable performance, built to last

- Robust design, built for demanding businesses
- High yield toners keep you printing without interruptions
- Keep printing for longer with scalable paper capacity



## Secure by design

### Device security

Your device protects your business by minimising attack surfaces through:

- Secure user access via LDAPS, active directory, and NFC authentication
- Controlled privileges using secure function lock and setting lock
- System integrity ensured by intrusion detection, Secure Boot, and digitally signed firmware

### Network security

Your network is protected with flexible, industry-standard tools including:

- Intrusion protection through protocol control, interface restrictions, and IPv4 filtering
- Secure connections via IEEE 802.1X for enterprise wired and wireless networks
- Encrypted communication using TLS, SSH, IPSEC, HTTPS, and SNMPv3
- Centralised management with device master settings, BRAdmin Pro 4, and mass deployment tool
- Syslog reporting for seamless real-time SIEM integration

### Document security

Your documents are protected through:

- Encrypted transfer via IPPS/HTTPS for printing
- Non-persistent memory, ensuring data is wiped after each job or reboot
- Secure Print Release, so documents only print when you're ready to collect them
- Third-party integration via Brother Solutions Interface (BSI), to streamline workflows

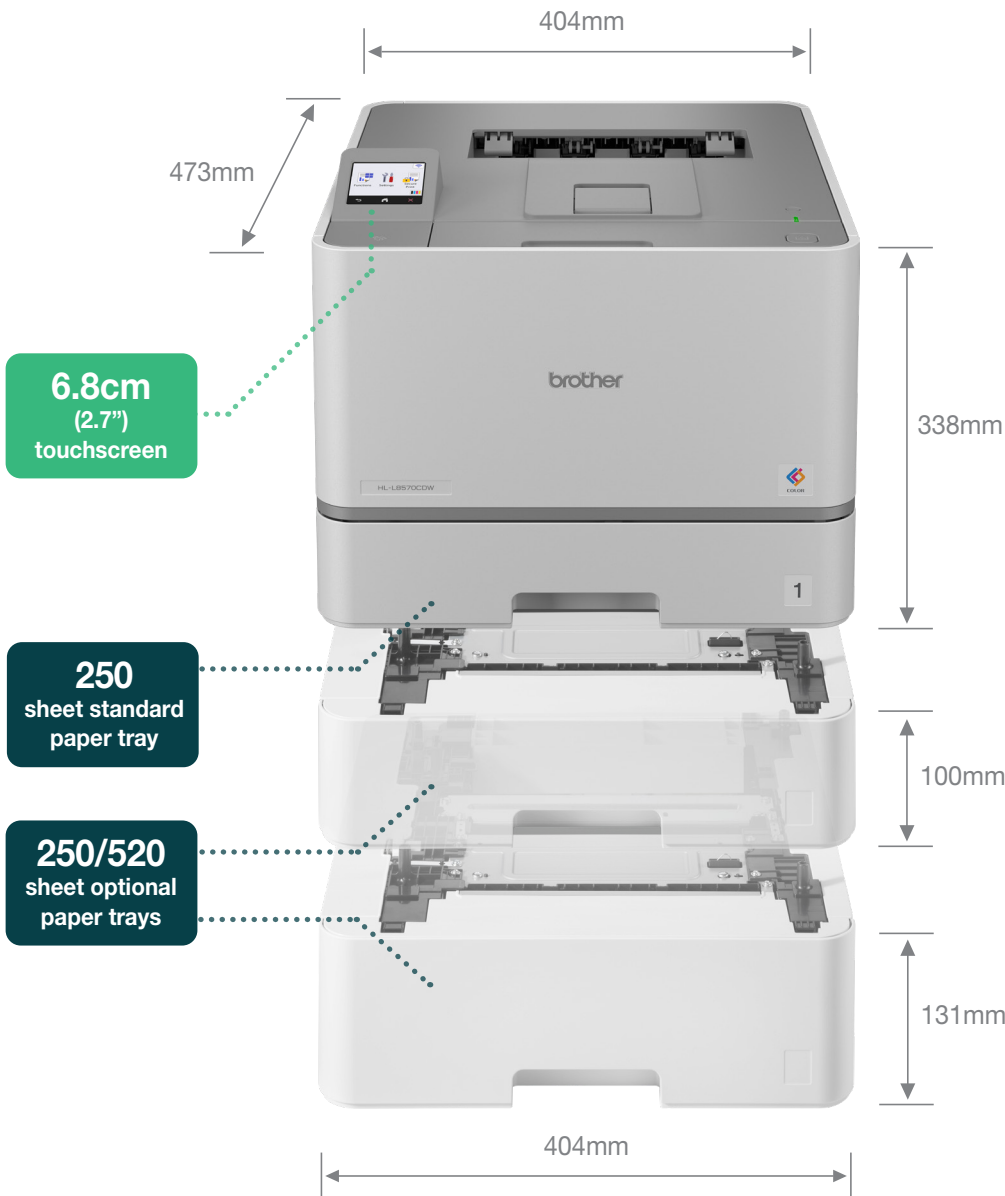
# Brother MPS

## Printing made simple with Brother MPS

Managed Print Services (MPS) ensure you maximise the performance and value of your print devices. Whatever your printing needs, we'll be "At your side" to find the solution that simplifies printer admin, saves time, keeps costs down, and helps you stay productive.

### Benefits include:

- No long-term commitments
- Ink and toner delivery before you run out
- Quick breakdown support
- Easy supplies recycling



## Supplies

### Toners



- TN625**  
3,000 BK, 1,800 C,M,Y
- TN625XL**  
5,500 BK, 4,500 C,M,Y
- TN625XXL (in-box)**  
7,500 BK, 6,500 C,M,Y
- TN627**  
10,000 BK, 10,000 C,M,Y

## Accessories

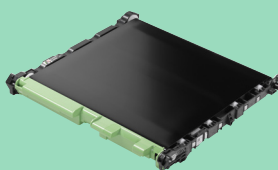
### Trays and cabinet

- LT350CL**  
250 sheet lower tray
- LT360CL**  
520 sheet lower tray
- ZUNTBC4FARBLASER**  
Floor standing cabinet

## Replaceable parts



Drum unit  
DR625CL



Belt unit  
BU635CL



Waste toner box  
WT229CL



Fuser unit  
FD5000

Paper feed kit  
for MP tray  
PFM5000



## General

### Technology

Electrophotographic (laser)

### Laser classification

Class 1 laser product

### Memory

1GB internal

### Processor

1200MHz

### Control panel

6.8cm (2.7") colour  
touchscreen LCD

### Local interface<sup>15</sup>

Hi-speed USB 2.0,  
USB 2.0 host (front | rear)

### Wired network interface

GigE (10Base-T/100Base-  
TX/1000Base-T)

### Wireless network interface

2.4GHz: IEEE 802.11b/g/n  
5GHz<sup>14</sup>: IEEE 802.11a/n  
(infrastructure mode),  
vertical pairing

### Wi-Fi Direct®

Print wirelessly without having  
to use a wireless access point  
(both automatic and manual  
methods supported)

## Print<sup>8,20</sup>

### Print speed (A4)

Up to 31ppm

### Print speed 2-Sided (A4)

Up to 20spm  
(10 sheets per minute)

### Resolution

2,400dpi (2,400 x 600dpi),  
600 x 600dpi  
(horizontal x vertical,  
dots per inch)

### First print out time (FPOT)

Less than 9.9 seconds from  
ready mode and standard tray

### Warm up time

Less than 15.1 seconds from  
sleep mode

## Driverless printing compatibility

### Windows modern print platform ready

Supports seamless, driverless  
printing via IPP for instant setup  
on Windows 10 (21H2+) and  
Windows 11 devices

### Mopria

Print common file types  
from supported Android  
mobile devices and Windows  
computers

### Apple AirPrint

Print common file types from any  
AirPrint enabled application

### Chrome OS™

Supports work with  
Chromebook printing

Our printers support driverless printing across Windows, macOS, iOS, and Android devices for instant, secure, and hassle-free setup

## Printer functions

### Direct print

Print directly from the front or rear USB host port using a USB flash memory drive. Supported formats include; PDF 2.0, JPEG, TIFF (scanned using brother model)

### Print complete notice

A notification can be set to go to your computer when printing

### Manual 2-Sided print<sup>4,21</sup>

Manual 2-Sided printing recommended for media not supported by automatic 2-Sided print

### Carbon copy<sup>4</sup>

Prints additional copies of the same document to paper taken from additional paper trays

### Header footer print<sup>3,21</sup>

Add the date, time, login user name, or custom text to the top or bottom of each printed page

### Skip tray<sup>16</sup>

Configures your paper tray selection to avoid specific trays/media for regular printing

### N-up printing<sup>3</sup>

Reduce up to 2, 4, 9, 16 or 25 A4 pages into just one A4 page, Mac (Airprint) up to 2, 4, 6, 9, or 16

### Poster printing<sup>4,21</sup>

Enlarge 1 A4 page into a poster using 4, 9, 16 or 25 A4 pages

### Watermark printing<sup>3,21</sup>

Watermark your documents with predefined or user-defined text

### Secure print<sup>3</sup>

Protect print jobs with a release code required at the device in order for them to be printed

### Reverse print<sup>4,21</sup>

Rotate the content of a printed document by 180°

### Storage print

Easily retrieve and print your documents or reprint stored documents all of which are AES 256 encrypted and held within an attached USB flash memory drive storage (not included) via the rear port

## Paper handling

### Paper input<sup>2</sup>

#### Standard (tray 1)

250 sheets

#### Multi-purpose tray

50 sheets, 10 envelopes

### Paper output<sup>2</sup>

150 sheets face down

1 sheet face up (straight path)

### Media sizes

#### Standard (tray 1)

Letter, legal, executive, A4, A5, A5 (long edge), A6, Mexico legal, India legal, folio, 16K (195 x 270mm)

#### Multi-purpose tray

Width: 76.2mm - 216mm  
Length: 116mm - 355.6mm  
Envelopes; C5, Com-10, DL, Monarch

#### Optional trays

Letter, legal, executive, A4, A5, Mexico legal, India legal, folio, 16K (195 x 270mm)

### Media weights

#### Standard (tray 1)

60 - 105gsm

#### Multi-purpose tray

60 - 163gsm

#### Optional trays

60 - 105gsm

### Media types

#### Standard (tray 1)

Thin paper, plain paper, thick paper, recycled paper

#### Multi-purpose tray

Thin paper, plain paper, thick paper, recycled paper, bond paper, label, envelope, env. thin, env. thick, glossy paper<sup>17</sup>

#### Optional trays

Thin paper, plain paper, recycled paper

#### Auto 2-Sided print

Thin paper, plain paper, thick paper, thicker paper, recycled paper, glossy paper

### Paper input sensors

On-screen and optional email alert notifications when input trays are empty or running low

## Connectivity

### Mobile Connect

Use a Brother app to print from a mobile device running iOS or Android operating system

### Brother Print Service Plugin<sup>5</sup>

Print from Android devices without a dedicated app

### Microsoft Universal Print

Organisations can manage their brother print infrastructure through cloud services from Microsoft

### Alexa Print<sup>15</sup>

Print using echo device and printer connected to the same network

### Brother Apps<sup>9</sup>

Cloud secure print

### Web Connect<sup>9,13</sup>

Without a PC you can download and print from Box, Microsoft SharePoint Online, Dropbox, Evernote, OneDrive, Google Drive™, OneNote

### Email print<sup>9,13</sup>

Enables driverless printing via email.

## Fleet management tools<sup>5</sup>

### BRAdmin<sup>4</sup>

LAN/WAN management software

### Clone device settings

Copy settings and configurations from one machine to another via a USB flash drive

### Auto pull configuration

The device periodically checks an encrypted settings file on a network location. If the device has been changed the file is used to change back to the desired state configuration

### Embedded web server

Using the IP address or node name of your device access via USB or network via a web browser to the web based print management software embedded onto the device using an randomly encrypted password

### Mass deployment tool

Provides a configuration interface to help manage and deploy device settings.

## Software<sup>5</sup>

### Brother iPrint&Scan

Print and check the machine status from Windows or macOS PC using Brother software

### Print support app<sup>4</sup>

As an alternative to Windows Modern Print this method enhances compatibility and ease of use by enabling printing without traditional printer drivers, making it a versatile and efficient solution for modern printing needs accessible through the Microsoft Store

Visit: [support.brother.com](https://support.brother.com) for the full list of supported OS and to download the latest software  
All trademarks, brand and product names are property of their respective companies

## Legacy printer drivers<sup>20</sup>

### PCL driver<sup>4</sup>

Generic PCL XL driver

### Universal printer driver<sup>4</sup>

BR-script3 driver that enables printing to any network or locally connected Brother laser printer that supports PostScript

### Print languages

PCL6, BR-script3

### Embedded fonts (PCL)

73 scalable fonts, 12 bitmap fonts

### Embedded fonts (BR-script)

66 scalable fonts

### Embedded barcodes (PCL)

16 bar codes fonts - Code39, Interleaved 2 of 5, FIM (US-PostNet), Post Net (US-PostNet), EAN-8, EAN-13, UPC-A, UPC-E, Codabar, ISBN (EAN), ISBN (UPC-E), Code128 (set A,B, C), EAN128 (set A,B,C), Code93, GS1Databar, MSI

### Linux

Printer driver (Linux, CUPS, LPD/LPRng)

## Network security

### Wired network security

SMTP-AUTH, SSL/TLS (IPP, HTTP, SMTP, LDAP), SNMP v3, 802.1x (EAP-MD5, EAP-FAST, PEAP, EAP-TLS, EAP-TTLS), OAuth(SMTP), Kerberos, Ipsec

### Wireless network security

WEP 64/128 bit, WPA-PSK (TKIP/AES), WPA2-PSK (TKIP/AES), WPA3-SAE (AES), SMTP-AUTH, SSL/TLS (IPP, HTTP, SMTP, LDAP), SNMP v3, 802.1x (EAP-FAST, PEAP, EAP-TLS, EAP-TTLS), OAuth(SMTP), Kerberos, IPsec, Wi-Fi Protected Setup® (WPS)<sup>10</sup>

### IPv4

ARP, RARP, BOOTP, DHCP, APIPA(Auto IP), WINS/NetBIOS name resolution, DNS Resolver, mDNS, LLNMR responder, LPR/LPD, Custom Raw Port/Port 9100, SMTP Client, IPP/IPPS, FTP Server, CIFS Client, TELNET Server, SNMPv1/v2c/v3, HTTP/HTTPS server, TFTP client and server, ICMP, Web Services (Print), Sntp Client, LDAP, LDAPS, Syslog

### Display IP address

The dynamic IP assigned to your device can be displayed on the home screen

### IPv6

NDP, RA, DNS resolver, mDNS, LLNMR responder, LPR/LPD, Custom Raw Port/Port 9100, IPP/IPPS, SMTP Client, FTP Server, CIFS Client, TELNET Server, SNMPv1/v2c/v3, HTTP/HTTPS server, TFTP client and server, ICMPv6, Web Services (Print), Sntp Client, LDAP, LDAPS, Syslog

### IP filter

Restrict which network users can or cannot access the device over the network

## Security features

### Email notifications

Automatically have the device send email alerts when it requires attention, such as when the toner is low or needs replacing

### Email reports

Receive usage reports on a regular basis via email

### Secure boot

All Brother print devices are secure by design. Devices automatically recognise security attacks and take preventative measures, including rebooting where necessary, in order to ensure the device remains secure

### Digitally-signed firmware

The firmware for Brother print devices is digitally signed and secure

### Active Directory/LDAP authentication

Utilise existing infrastructure to restrict access to Brother devices using AD/LDAP. Staff can easily use their existing network login credentials to authenticate

### Port-based network access control

(IEEE 802.1x)  
Brother devices are in full compliance with this standard, to allow connection to an 802.1x EAP (extensible authentication protocol) protected network

### Restrict network protocols

The network access control feature allows an administrator to restrict communication protocols (e.g. FTP, Telnet) as required

### Setting lock

Configure secure access to the devices control panel by locking it

### Secure function lock 3.0

Use a four digit pin or a password to identify and authenticate an individual or groups of users over a network. Allows access control with username for up to 200 users

### Cloud secure print<sup>9</sup>

Enables password protected driverless print job release

### Store print log

Allows audit of a print log file saved to CIFS server. Record ID, type, name, user, date, time, page count for every print job

### Firmware updates

In addition to allowing automatic updates to the latest version the printer can be set to not receive older firmware versions to avoid downgrade by an unauthorised user

### Syslog

Allows IT Admin to access a single application (SIEM tool) to get device status updates for audit purposes over Syslog

## Near-field communications (NFC)

### NFC card reader

Supports secure user authentication via NFC card reader for access control, and enables personalised workflows through NFC shortcut configuration. Third-party card reader support requires additional purchase and can be connected to the front or rear USB host and registered via the embedded web server

### Integrated support for NFC

include: (ISO14443 Type A) MIFARE Standard / Plus / Ultralight / Ultralight C / DESfire / my-d move (ISO15693 Type B) Tag-it

### External NFC card reader support

RFIDeas pcProx Enroll - RDR-6081AKU; RDR-6281AKU; RDR-6381AKU; RDR-6E81AKU; RDR-6H81AKU  
RFIDeas AIR ID Enroll - RDR-7081AKU; RDR-7581AKU; RDR-7F81AKU  
Elatec - TWN3 MIFARE; TWN3 MIFARE NFC; TWN3 Multi ISO; TWN4 MIFARE NFC

## Developers

### Brother Solutions Interface (BSI)

Create powerful cloud and on premise solutions directly integrating the advanced print, scan and security capabilities of Brother devices. For more information visit: [www.brother.eu/developers](http://www.brother.eu/developers)

## Supplies<sup>1</sup>, upgrades and accessories

### Standard toner

TN625  
3,000 pages (BK)  
1,800 pages (C,M,Y)

### High yield toner

TN625XL  
5,500 pages (BK)  
4,500 pages (C,M,Y)

### Super-high yield toner (in-box)

TN625XXL  
7,500 pages (BK)  
6,500 pages (C,M,Y)

### Ultra-high yield toner

TN627  
10,000 pages (BK)  
10,000 pages (C,M,Y)

### Drum unit

DR625CL approx 50,000 pages  
at 3 pages per job

### Belt unit

BU635CL approx. 100,000  
pages at 3 pages per job

### Waste toner box

WT229CL approx 50,000 pages  
at 5 pages per job

### Fuser unit

FD5000 approx 100,000 pages  
at 5 pages per job

### Paper feed kit for MP tray

PFM5000 approx 50,000 pages  
at 5 pages per job

### Carton contents

Machine, in-box toners, drum, belt, waste toner box, fuser, PF kit, power supply cord, quick set-up guide, warranty card, (PC interface cable NOT included)

### Optional paper trays<sup>2</sup>

250 sheet tray (LT350CL)  
520 sheet tray (LT360CL)  
Maximum combinations of up to 2 x LT350CL or 2 x LT360CL, 1 x LT350CL and 1 x LT360CL

### Optional cabinet

ZUNTBC4FARBLASER Brother professional colour laser floor standing printer cabinet

## Dimensions and weights (WxDxH)

### Printer without carton

404 x 473 x 338mm - 21.3kg  
inc. TN/DR/WT/BU/FD/PF

### Printer with carton

606 x 561 x 501mm - 26.9kg

### Optional paper trays

250 sheet tray: 404 x 446  
x 100mm - 3.25kg  
520 sheet tray: 404 x 446  
x 131mm - 4.33kg

### Optional cabinet

410 x 484 x 400mm - 10kg

## Duty cycle

### Recommended monthly

Up to 7,500 pages monthly  
print volume

### Maximum monthly<sup>6</sup>

Up to 80,000 pages monthly  
print volume

## Environment

### Power requirement

AC 220-240V, 50/60Hz

### Power consumption<sup>11</sup>

Printing: 540W  
(330W in quiet mode)  
Ready: 60W  
Sleep: 7.6W  
Networked standby: 7.1W  
Deep sleep: 0.4W  
Power off: 0.04W

### Sound pressure<sup>12</sup>

Printing: 49dbA  
Quiet print mode: 44dbA  
Default ready: 31dbA

### Sound power<sup>12</sup>

Printing: 6.54BA  
Quiet print mode: 5.91BA  
Default ready: 4.48BA  
Deep sleep: 3.38BA

### TEC value

0.40 kWh/Week

### Eco mode

With seamless functionality the eco control system of the printer is designed to ensure lower noise levels, consume less energy when not in use and optimise toner usage which all help to reduce the total cost of ownership

### Operating environment

Humidity: 20 - 80%  
Temp: 10° - 32.5° centigrade  
50° - 90.5° fahrenheit

### Storage environment

Humidity: 35 - 85%  
Temp: 0° - 40° centigrade  
32° - 104° fahrenheit

## Computer platforms

### Windows

Windows 11  
(Home|Pro|Education|Enterprise)  
Windows 10  
(Home|Pro|Education|Enterprise)  
(32 or 64 bit editions)  
Windows Server  
2025, 2022, 2019, 2016

### Linux

Supported package management system:<sup>19</sup>  
dpkg, rpm

### Macintosh<sup>18</sup>

macOS 13 or greater

### ChromeOS™

Compatible with Chromebooks, including "Works with Chromebook" certified printing support

Visit: [support.brother.com](https://support.brother.com) for the full list of supported OS and to download the latest software

## Disk space requirements

50MB - Windows drivers only  
1.8GB - Windows 11, 10, applications inc drivers

500MB - macOS applications

20MB - Linux drivers only

## Certification

### Blue Angel

### Nordic Swan

### GS Mark

### AirPrint

### Wi-Fi certified

Wi-Fi Direct, Wi-Fi Protected Setup, WPA3™ - Enterprise, Personal

### Morproia certified

Ensures universal compatibility for driverless printing across Windows, Android, and compatible mobile operating systems

1. Approx declared toner yield value in accordance with ISO/IEC 19798. 2. Calculated with 80gsm sheets of paper. 3. Windows & macOS. 4. Windows only. 5. Free download from the Brother solutions centre <http://solutions.brother.com> 6. Number of printed pages per month can be used to compare designed durability between Brother products. For maximum printer life, it is best to choose a printer with a duty cycle that exceeds your print requirements. 7. Requires Brother software. 8. Based on ISO/IEC 17629. 9. Requires an internet connection. 10. Wi-Fi Direct supports WPA2-PSK (AES) only. 11. Measured according to IEC 62301 Edition 2.0. All values are approximate; power consumption varies depending on the usage environment or part wear. 12. In accordance with ISO 7779. 13. Requires additional activation. 14. May not be available in your region. 15. Third party USB hubs not supported. 16. Requires installation of optional trays. 17 Set only a single sheet. 18. On macOS AirPrint only. 19. Red Hat Enterprise Linux 8.6 64bit, Red Hat Enterprise Linux 9.1 64bit, Fedora 39 64bit, Mageia 9 32bit, Mageia 9 64bit, openSUSE 15.5 64bit, SUSE Enterprise15-SP4 64bit, Debian 12.2.0 32bit, Debian 12.2.0 64bit, Ubuntu MATE 18.04 32bit, Ubuntu 22.04 64bit, Ubuntu 23.10 64bit, Linux Mint 21.2 64bit, Ubuntu 24.04 64bit. 20. Microsoft is transitioning towards driverless printing as the preferred standard. Legacy driver installations remain supported for customers with existing deployment requirements. 21. Advanced settings via legacy driver or the print support app only. 22. Compared to Brother's previous equivalent model. 23. Figure based on Brother's internal analysis at the time of publication. Figures may fluctuate depending on manufacturing methods and the availability of materials. 24. These results are based on Brother's internal calculations, compared to previous equivalent model. The CO<sub>2</sub> emissions scope covers C1 (purchased goods and services), C11 (use of sold products), and C12 (end-of-life treatment of sold products). Exact values may vary depending on country or region, manufacturing methods and the availability of materials.



### Working with you for a better environment

At Brother, our green initiative is simple. We strive to take responsibility, act respectfully and try to make a positive difference to help build a society where sustainable development can be achieved. We call this approach Brother Earth.

[www.brotherearth.com](http://www.brotherearth.com)

All specifications correct at the time of printing and are subject to change. Brother is a registered trademark of Brother Industries Ltd. Brand product names are registered trademarks or trademarks of their respective companies.